



## CMS/IP Internet Charging

OUR INTERNET CHARGING SYSTEM GIVES YOU AUTOMATED CONTROL and management of internet access by incorporating it into CMS/IP. Each time users log on their access is automatically recorded and payment debited from their account. The activity is recorded on the central database for reporting and analysis at a later date.

Once set up, the system runs itself. Any usage charges are automatically deducted from the client's CMS/IP account and users can even increase their account balance themselves at any time using CMS/IP's account reload facilities.



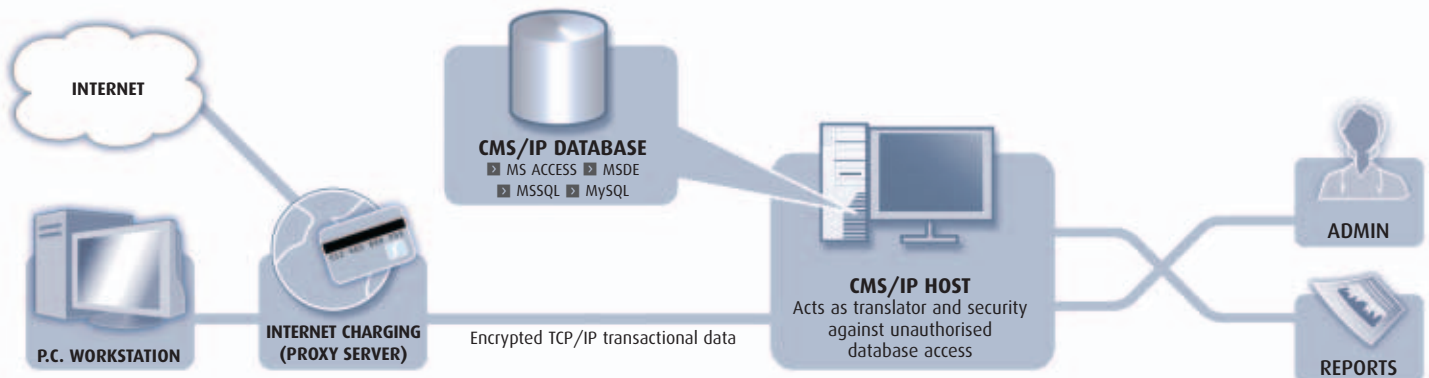
**Automated and flexible,** CMS/IP Internet Charging delivers simple, straightforward internet administration.

### Benefits

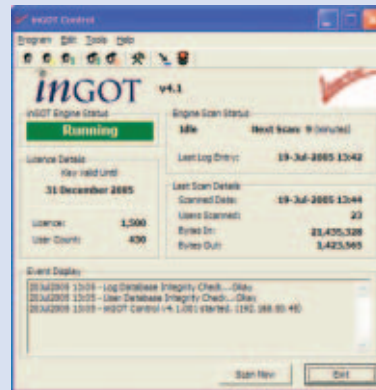
- Convenient for users
- Effortless for you
- Accurate charging
- Detailed usage records
- Freedom from cash and administration



## How the CMS/IP Internet Access links to CMS/IP



OUR INTERNET CHARGING SYSTEM TAKES ADVANTAGE of the high level of automation offered by CMS/IP and significantly reduces the time that you need to spend administering your Internet service. There is no need for cashier services, and it even reduces the amount of time that people spend on the Internet – they think before they access or download files.



## Features

- Self-administering – populates the user database from existing network services
- Choose from two different charging methods – actual time used, or increments of time
- Eliminate manual administration with automatic user detection
- Allocate costs to an individual or department for better budget control
- Set different billing rates for users or user groups
- Interpret usage trends using reports from the CMS/IP database
- Allow immediate short-term access by allocating an initial quota to new users

## Technical Specifications

### For Windows NT/2000/2003 Domain and MS Proxy Server Environment:

- Microsoft Windows NT4, 2000, XP or 2003 Server
- Microsoft Proxy Server v2.0/ISA Server
- Microsoft Access/SQL Server

### For Novell Network and BorderManager Environment:

- Netware 4.1 Operating System or later
- Novell BorderManager 3 Proxy Server
- Novell Network Client for Windows

**NB:** although MS-Proxy/ISA will only run on a Windows server, inGOT itself can run on a workstation (e.g. XP). Microsoft Access is only really needed for reporting.

### BEAR Solutions (Australasia) Pty Ltd

Tel: +61 2 9815 0400  
 Within Australia: 1300 7 BEARS (23277)  
 Fax: +61 2 9869 7988

sales@bearsolutions.com.au  
 support@bearsolutions.com.au  
 www.bearsolutions.com.au

Suite 101, Building A, 242-244 Beecroft Road, Epping, NSW 2121, Australia

